



Container specifications and capacities vary slightly between different carriers and container manufacturers. Following specifications can be used as a close approximate only.



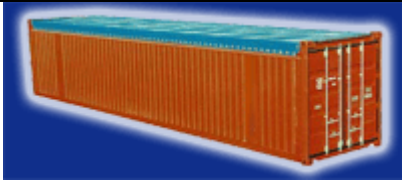
**20 ft Open Top Container**

Suitable for over height cargo loading from top side, e.g. by crane loading from door side, e.g. with cargo hanging from overhead tackle. Door header can be swung out on all open containers.

For fastening tarpaulins, lashing bars are available on the outside of the walls. Using one way tarpaulins requires the corner castings to be accessible. Fork-Lift pockets on a number of existing containers.

The capacity of the floor for use of fork-lift trucks exceeds the ISO standard by 33% on all 20' open top containers. Numerous lashing devices on the top and bottom longitudinal rails and the corner posts. Lashing devices have a permissible load of 1,000 kg (2,205 lbs) each.

| <b>Interior Dims<br/>(L x W x H)</b> | <b>Door Opening<br/>(L x H)</b> | <b>Tare Wgt<br/>(Lbs, Kgs)</b> | <b>Capacity<br/>(CuFt, M3)</b> | <b>Payload<br/>subject to over<br/>the road weight limitations</b> |
|--------------------------------------|---------------------------------|--------------------------------|--------------------------------|--|
| 19'4" x 7'8" x 7'7"                  | 7'8" x 7'6"                     | 4,960 Lbs<br>2,250 Kgs         | 1,130 CuFt<br>32 M3            | 38,000 Lbs<br>17,237 Kgs   |



**40 ft Open Top Container**

Suitable for over height cargo loading from top side, e.g. by crane loading from door side, e.g. with cargo hanging from overhead tackle. Door header can be swung out on all open containers.

For fastening tarpaulins, lashing bars are available on the outside of the walls. Using one way tarpaulins requires the corner castings to be accessible.

The capacity of the floor for use of fork-lift trucks exceeds the ISO standard by 33% on all 40' open top containers. Numerous lashing devices on the top and bottom longitudinal rails and the corner posts. Lashing devices have a permissible load of 1,000 kg (2,205 lbs) each.

| <b>Interior Dims<br/>(L x W x H)</b> | <b>Door Opening<br/>(L x H)</b> | <b>Tare Wgt<br/>(Lbs, Kgs)</b> | <b>Capacity<br/>(CuFt, M3)</b> | <b>Payload<br/>subject to over<br/>the road weight limitations</b> |
|--------------------------------------|---------------------------------|--------------------------------|--------------------------------|--|
| 39'5" x 7'8" x 7'9"                  | 7'8" x 7'5"                     | 9,150 Lbs<br>4,150 Kgs         | 2,363 CuFt<br>66.9 M3          | 44,000 Lbs<br>19,958 Kgs   |

|  |  |  |  |  |
|--|--|--|--|--|
|  |  |  |  |  |
|  |  |  |  |  |